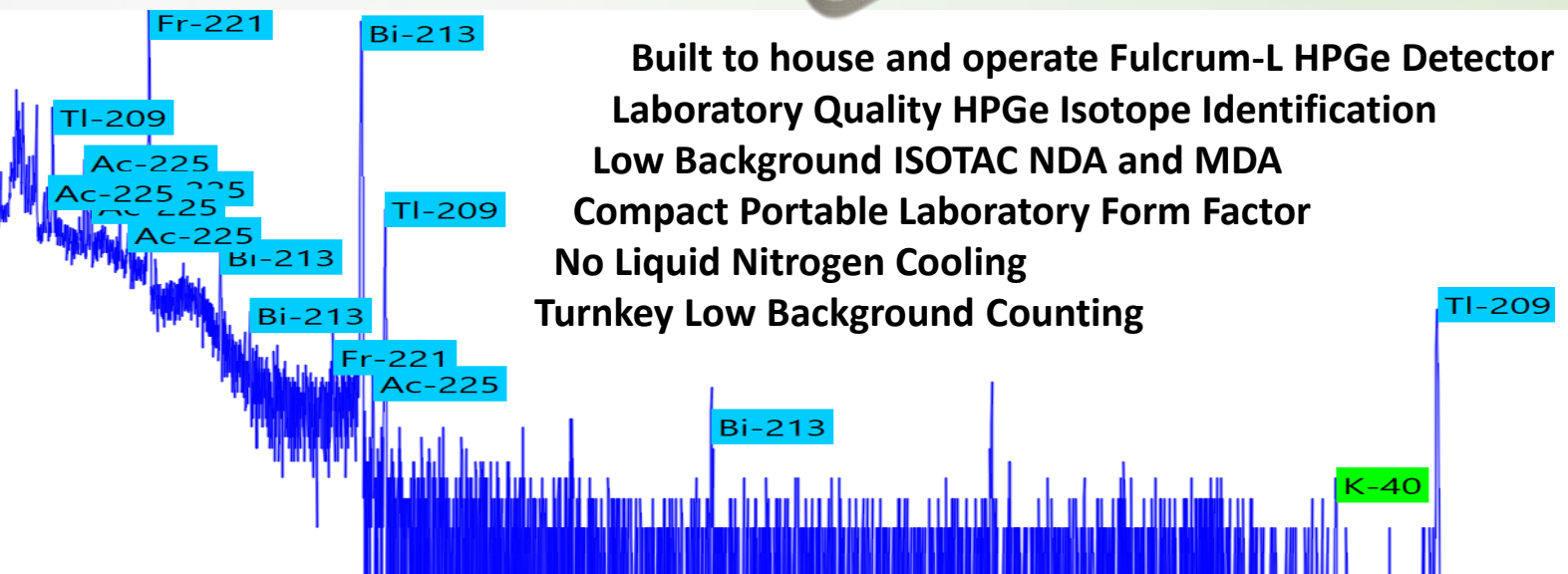


# Shield Cart



Heavy Duty Cart with Pb Shielding for Fulcrum-L HPGe Detector Operation



**Built to house and operate Fulcrum-L HPGe Detector**  
**Laboratory Quality HPGe Isotope Identification**  
**Low Background ISOTAC NDA and MDA**  
**Compact Portable Laboratory Form Factor**  
**No Liquid Nitrogen Cooling**  
**Turnkey Low Background Counting**

# Shield Cart

## Shield Cart Specifications:

Weight Capacity:	1400 lbs.
Weight with Pb Shielding As Shown	640 lbs.
Dimensions (l x w x h):	33" x 22" x 37" (84 cm x 56 cm x 94 cm)
Battery life (BB-2557 100 W-h, 1.7 lbs.):	5-6 hrs. per battery (Max = 2)
Battery life (BB-2590, 300 W-h, 3.8 lbs.):	15 hrs. per battery (Max = 2)
Power supply:	100-240 VAC, 50-60 Hz
User maintenance:	None + No Liquid Nitrogen
User interface device:	Windows Laptop

## Shield Cart Features:

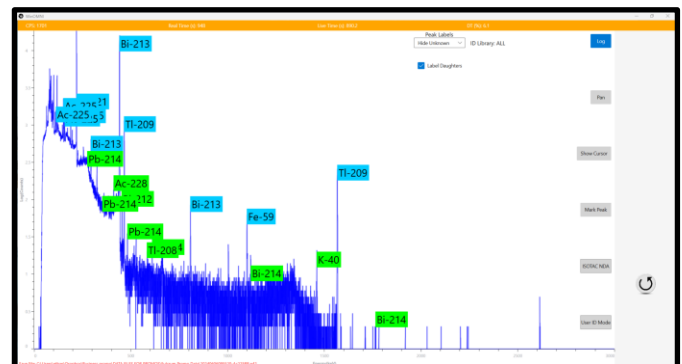
- Radioisotope Production and Purity
- 2-inch thick Pb Shielding Enclosure
- Copper lining to suppress Pb x rays
- Pb Shielding is held firmly in place by a sturdy steel shroud
- Optional Fixed-Distance Stackable Source Holders are available
- Provides A Mobile Portable Low-Background Counting Capability
- User Friendly Manual Operation



Manual Laboratory Operation of Fulcrum-L HPGe Detector for Shielded Radio Assay Measurements



Heavy Duty Casters



Low Background HPGe Gamma Spectroscopy